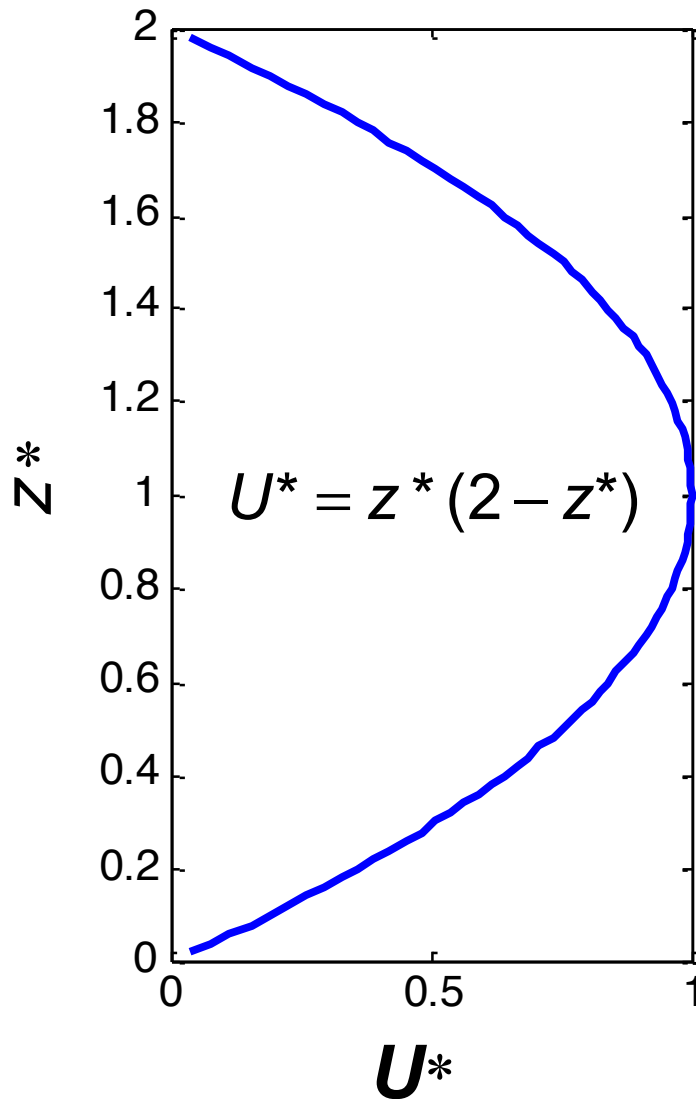


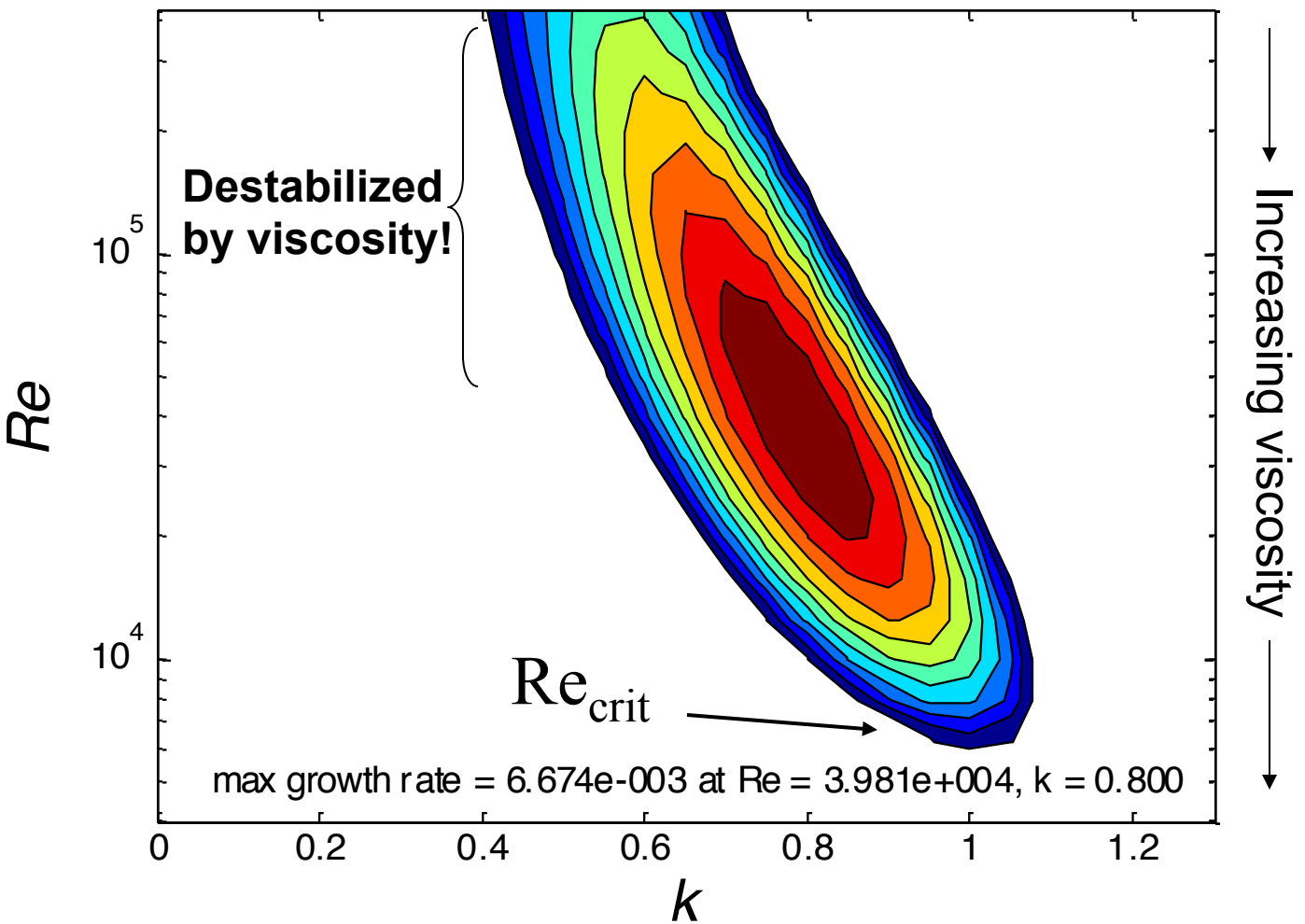
Plane Poiseuille Flow



$$\text{Re} = \frac{u_0 h}{\nu}$$

Plane Poiseuille Flow

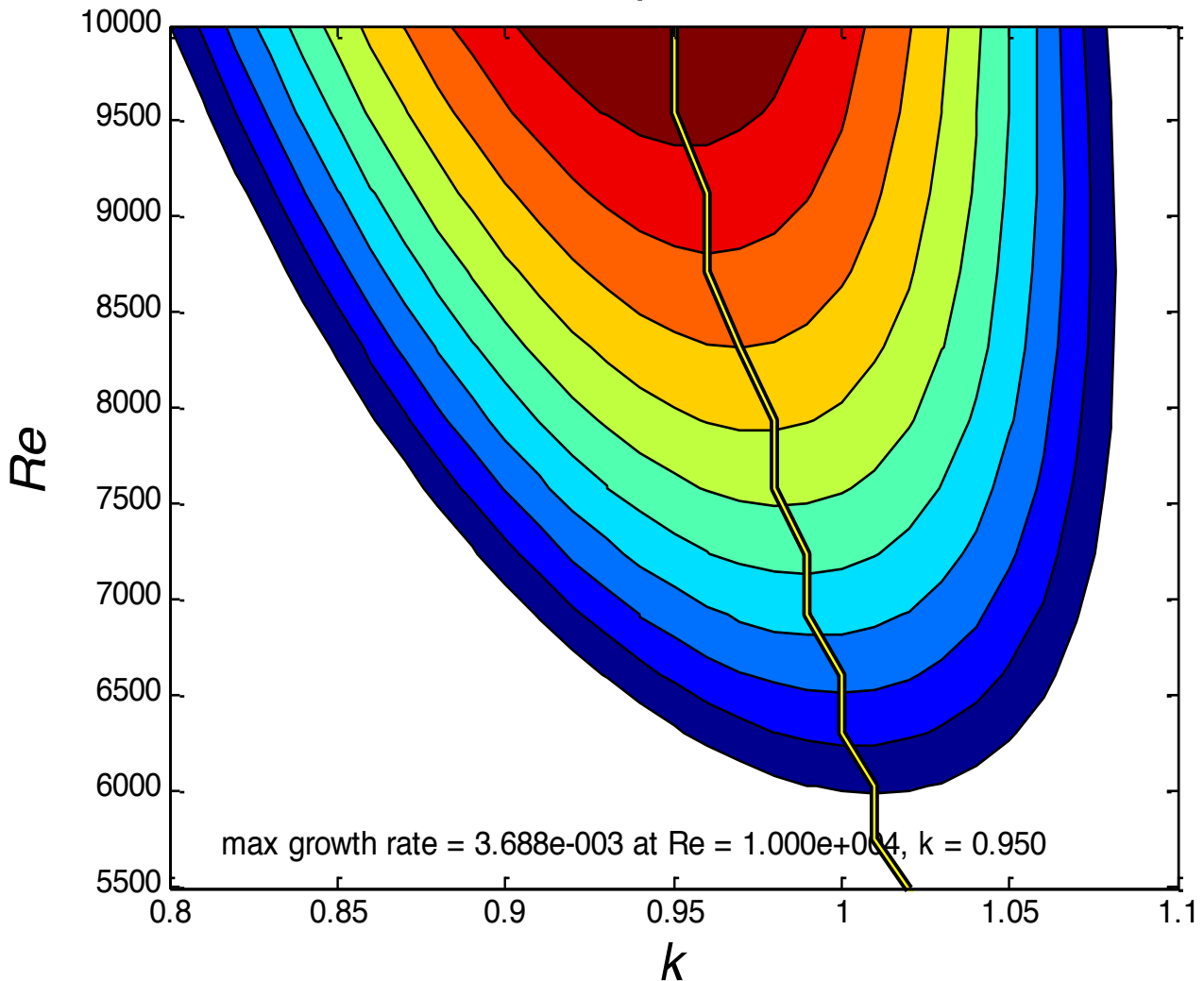
Growth rates for plane Poiseuille flow



$$Re = \frac{u_0 h}{\nu}$$

$dz=.02, Re_{crit}=5989$

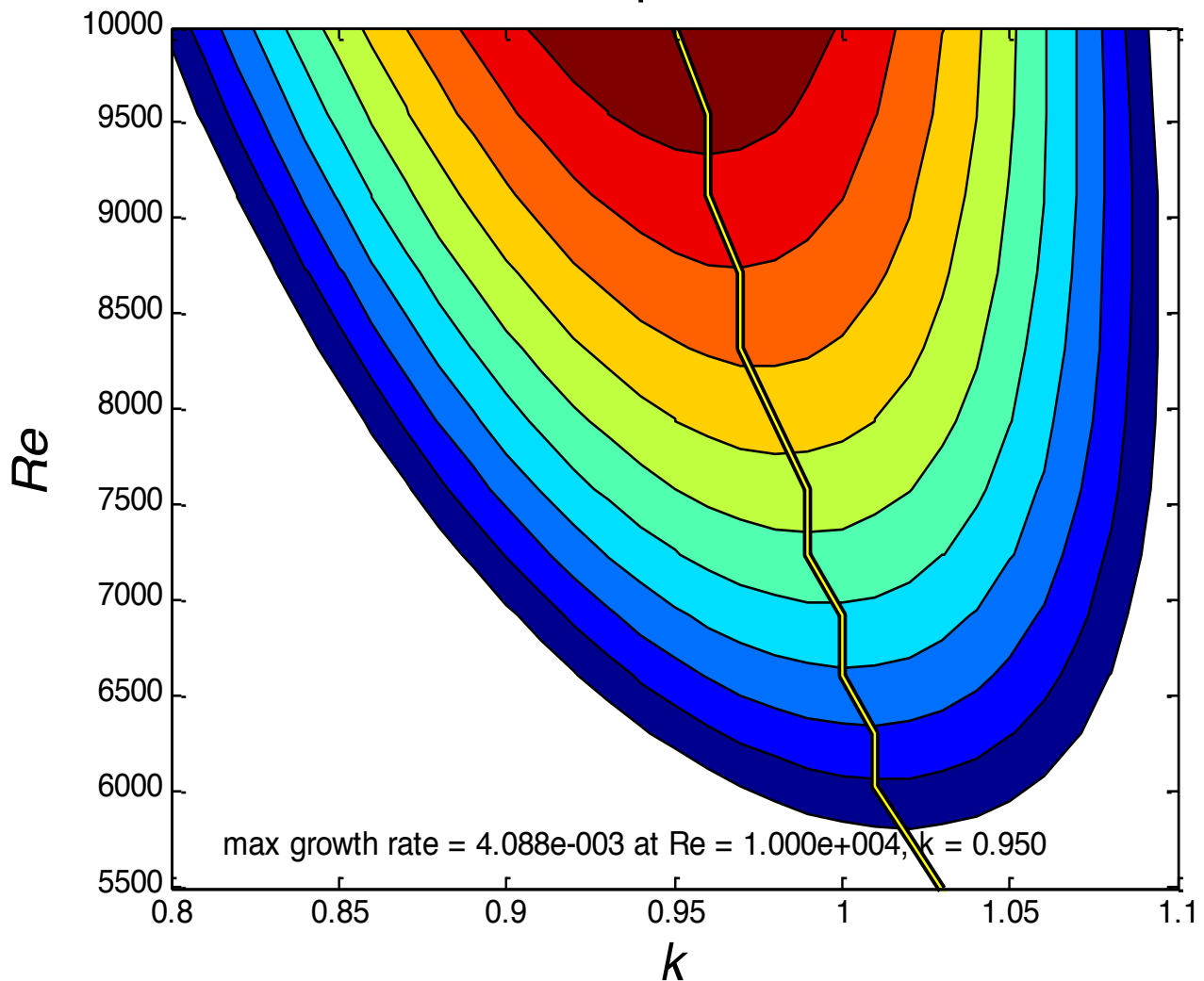
Growth rates for plane Poiseuille flow



Exact $Re_{crit}=5780$; error=+3.6%

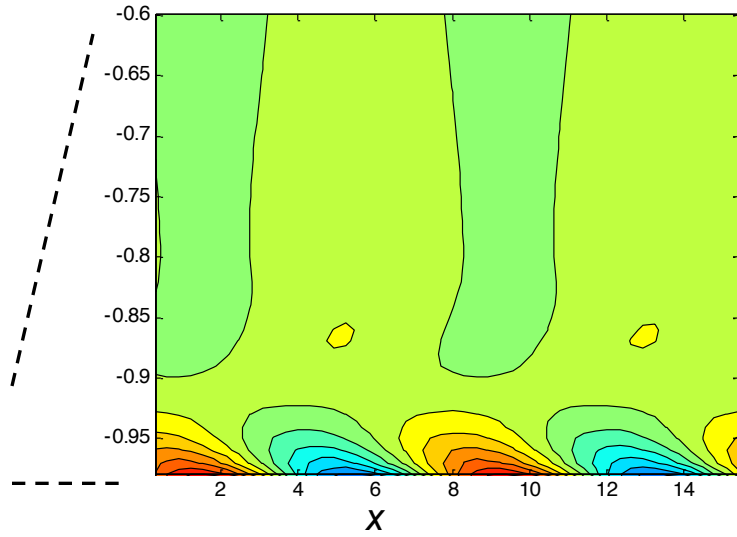
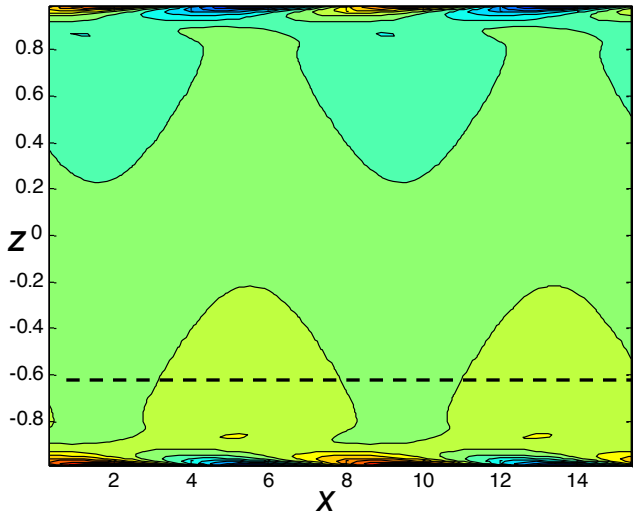
$$dz=.01, Re_{crit}=5807$$

Growth rates for plane Poiseuille flow



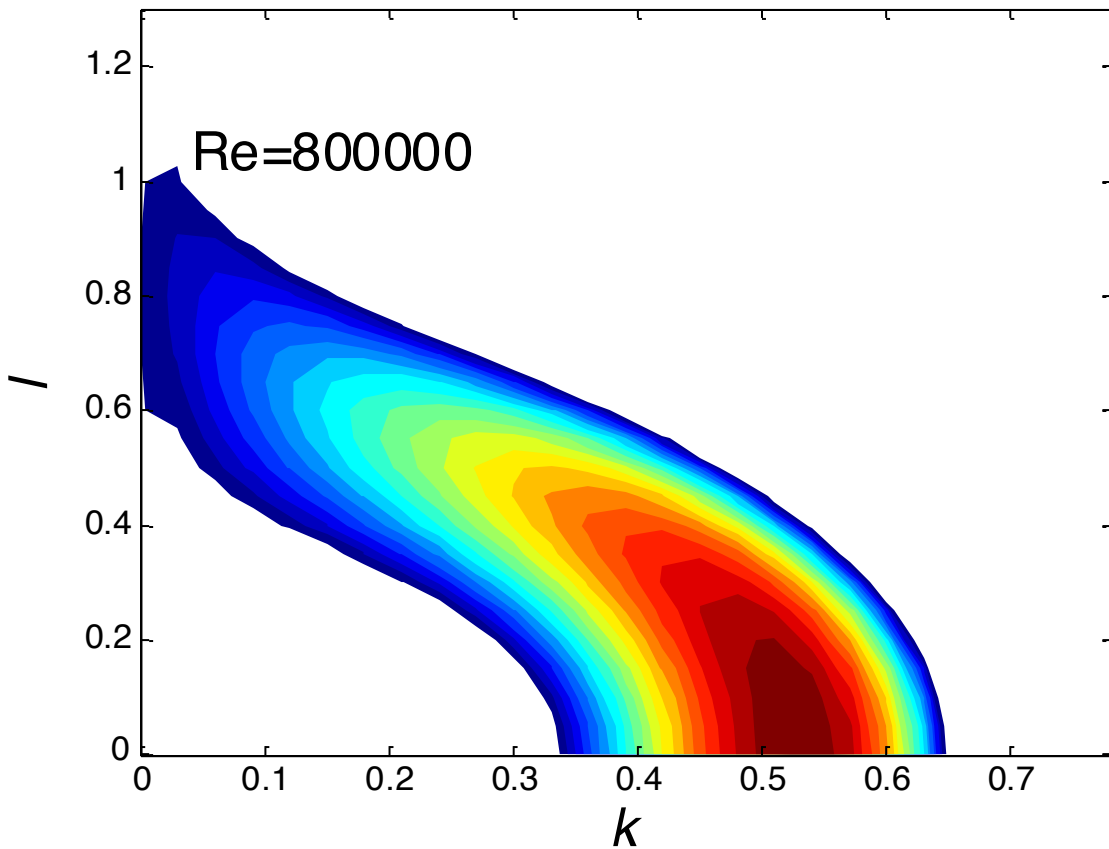
Exact $Re_{crit}=5780$; error=+0.5%.

vorticity eigenfunction



Oblique modes

Growth rates for plane Poiseuille flow



Max growth rate = 0.0041

$l=0$

FGM is still 2-dimensional